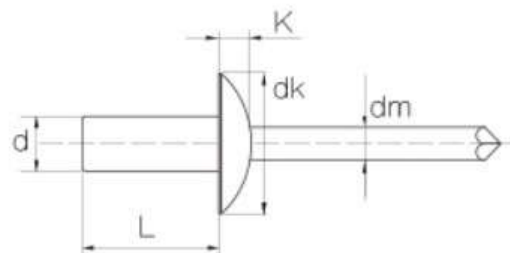


## Copper / steel Rivet

### Dome Head – Sealed Type

#### Water proof

**Blind Rivets** are now capable in every industrial field to replace Welding, Tapping Screws or Bolts & Nuts and to fasten materials speedy and securely from one side of the work by using an exclusive fastening tool.



Advantage:	Applications
<ul style="list-style-type: none"> <li>Unique cup shaped end configuration seals tight, preventing passage of vapour or liquid through set rivet.</li> <li>Provides greater tensile and shear strength than equivalent open end</li> <li>Mandrel retention.</li> </ul>	<ul style="list-style-type: none"> <li>Electrical enclosures</li> <li>Grounding straps</li> <li>RF/EMI shielding</li> <li>Plumbing &amp; HVAC assemblies</li> <li>Marine and chemical environments</li> </ul>

	Material	Finish	Head
<b>Body:</b>	Copper	Natural polish	Dome (Truss)
<b>Mandrel:</b>	Steel	Zinc Plated	

Product Code SKU	Size		Body Length L (±1)mm	Head Height K (mm)	Head Dia. (Max) dK (mm)	Mandrel (Ref) P (mm)	Hole Size (mm)	Grip Range (mm)	Tensile N	Shear N
	d (mm)	Inch								
WCSD4-2	3.2	1/8"	8	1.3	6.4	27	3.3-3.4	1.5-3.5	1000	800

02 9636 2369  
[sales@tower-tr.com.au](mailto:sales@tower-tr.com.au)  
[www.tower-tr.com.au](http://www.tower-tr.com.au)

Disclaimer: every effort has been made to ensure the information provided in this document is accurate and up to date. However, Tower Fastening System does not guarantee or warrant the accuracy, completeness, or currency of the information provided.

