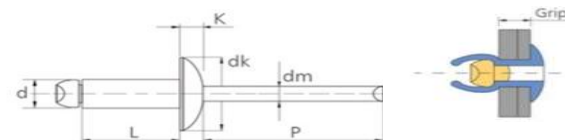


Open Blind Rivet

Blind Rivets are now capable in every industrial field to replace Welding, Tapping Screws or Bolts & Nuts and to fasten materials speedy and securely from one side of the work by using an exclusive fastening tool.



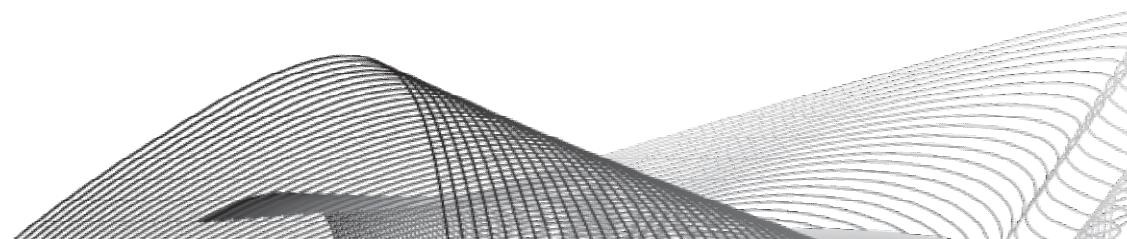
Advantage:	Applications
<ul style="list-style-type: none"> * Strong but lower cost fastener * Available in variety of materials and ideal for wide range of applications * Painted colour finished available to match surrounding 	<ul style="list-style-type: none"> • Office furniture • Automotive • Building • Construction • Leather production

	Material	Finish	Head
Body:	Aluminium 5052	Polished	Dome (Truss)
Mandrel:	Steel	Zinc Plated	

Product Code SKU	Size		Body Length L (±1)mm	Head Height K (mm)	Head Dia. (Max) dK (mm)	Mandrel (Ref) P (mm)	Hole Size (mm)	Grip Range (mm)	Tensile N	Shear N
	d (mm)	Inch								
ASD3-2	2.4	3/32"	6	1.0	5.0	27	2.5-2.6	0.5-4.0	350	250
ASD3-3	2.4	3/32"	8	1.0	5.0	27	2.5-2.6	4.0-6.0	350	250
ASD3-4	2.4	3/32"	10	1.0	5.0	27	2.5-2.6	6.0-8.0	350	250
ASD4-1	3.2	1/8"	5	1.3	6.7	27	3.3-3.4	0.5-1.5	700	500
ASD4-2	3.2	1/8"	6	1.3	6.7	27	3.3-3.4	1.0-3.5	700	500
ASD4-3	3.2	1/8"	8	1.3	6.7	27	3.3-3.4	3.5-5.0	700	500
ASD4-4	3.2	1/8"	10	1.3	6.7	27	3.3-3.4	5.0-7.0	700	500
ASD4-5	3.2	1/8"	12	1.3	6.7	27	3.3-3.4	7.0-9.0	700	500
ASD4-6	3.2	1/8"	14	1.3	6.7	27	3.3-3.4	9.0-11.0	700	500
ASD4-8	3.2	1/8"	16	1.3	6.7	27	3.3-3.4	9.0-12.5	700	500
ASD4-10	3.2	1/8"	20	1.3	6.7	27	3.3-3.4	12.5-16.5	700	500
ASD4-11	3.2	1/8"	22	1.3	6.7	27	3.3-3.4	15.0-19.0	700	500
ASD4-12	3.2	1/8"	25	1.3	6.7	27	3.3-3.4	15.0-21.0	700	500

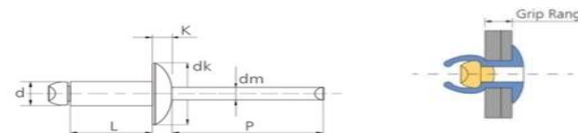
1300 532 803
sales@tower-tr.com.au
www.tower-tr.com.au

Disclaimer: every effort has been made to ensure the information provided in this document is accurate and up to date. However, Tower Fastening System does not guarantee or warrant the accuracy, completeness, or currency of the information provided.



Open Blind Rivet

Blind Rivets are now capable in every industrial field to replace Welding, Tapping Screws or Bolts & Nuts and to fasten materials speedy and securely from one side of the work by using an exclusive fastening tool.



Advantage:

- * Strong but lower cost fastener
- * Available in variety of materials and ideal for wide range of applications
- * Painted color finished available to match surrounding

Applications

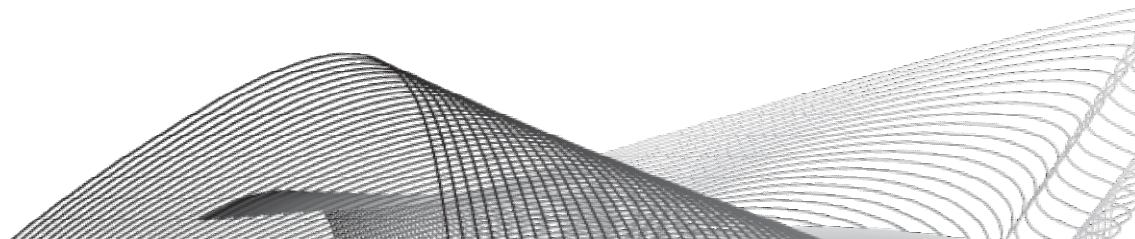
- Office furniture
- Automotive
- Building
- Construction
- Leather production

	Material	Finish	Head
Body:	Aluminium 5052	Polished	Dome (Truss)
Mandrel:	Steel	Zinc Plated	

Product Code SKU	Size		Body Length L (±1)mm	Head Height K (mm)	Head Dia. (Max) dK (mm)	Mandrel (Ref) P (mm)	Hole Size (mm)	Grip Range (mm)	Tensile N	Shear N
	d (mm)	Inch								
ASD5-1	4.0	5/32"	6	1.7	8.4	27	4.1-4.2	1.0-3.0	1200	850
ASD5-2	4.0	5/32"	8	1.7	8.4	27	4.1-4.2	3.0-5.0	1200	850
ASD5-3	4.0	5/32"	10	1.7	8.4	27	4.1-4.2	4.0-6.5	1200	850
ASD5-4	4.0	5/32"	12	1.7	8.4	27	4.1-4.2	6.0-8.5	1200	850
ASD5-5	4.0	5/32"	14	1.7	8.4	27	4.1-4.2	7.0-10.5	1200	850
ASD5-6	4.0	5/32"	16	1.7	8.4	27	4.1-4.2	8.0-12.5	1200	850
ASD5-8	4.0	5/32"	18	1.7	8.4	27	4.1-4.2	10.0-14.5	1200	850
ASD5-10	4.0	5/32"	20	1.7	8.4	27	4.1-4.2	12.0-16.0	1200	850
ASD5-12	4.0	5/32"	25	1.7	8.4	27	4.1-4.2	16.0-21.0	1200	850

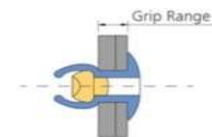
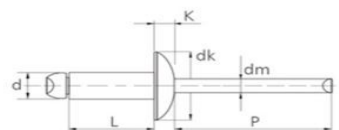
1300 532 803
sales@tower-tr.com.au
www.tower-tr.com.au

Disclaimer: every effort has been made to ensure the information provided in this document is accurate and up to date. However, Tower Fastening System does not guarantee or warrant the accuracy, completeness, or currency of the information provided.



Open Blind Rivet

Blind Rivets are now capable in every industrial field to replace Welding, Tapping Screws or Bolts & Nuts and to fasten materials speedy and securely from one side of the work by using an exclusive fastening tool.



Advantage:

- * Strong but lower cost fastener
- * Available in variety of materials and ideal for wide range of applications
- * Painted color finished available to match surrounding

Applications

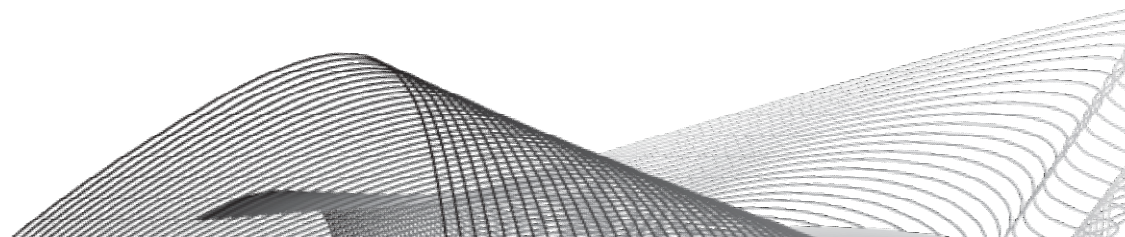
- Office furniture
- Automotive
- Building
- Construction
- Leather production

	Material	Finish	Head
Body:	Aluminium 5052	Polished	Dome (Truss)
Mandrel:	Steel	Zinc Plated	

Product Code SKU	Size		Body Length	Head Height	Head Dia. (Max)	Mandrel (Ref)	Hole Size	Grip Range	Tensile	Shear
	d (mm)	Inch								
ASD6-1	4.8	3/16"	6	2.0	10.1	27	4.9-5.0	1.0-2.5	1800	1500
ASD6-2	4.8	3/16"	8	2.0	10.1	27	4.9-5.0	2.5-4.0	1800	1500
ASD6-3	4.8	3/16"	10	2.0	10.1	27	4.9-5.0	4.0-6.0	1800	1500
ASD6-4	4.8	3/16"	12	2.0	10.1	27	4.9-5.0	6.0-8.0	1800	1500
ASD6-5	4.8	3/16"	14	2.0	10.1	27	4.9-5.0	8.0-10.0	1800	1500
ASD6-6	4.8	3/16"	16	2.0	10.1	27	4.9-5.0	9.0-12.0	1800	1500
ASD6-8	4.8	3/16"	18	2.0	10.1	27	4.9-5.0	10.0-14.0	1800	1500
ASD6-10	4.8	3/16"	20	2.0	10.1	27	4.9-5.0	12.0-16.0	1800	1500
ASD6-12	4.8	3/16"	25	2.0	10.1	27	4.9-5.0	16.0-21.0	1800	1500
ASD6-14	4.8	3/16"	27	2.0	10.1	27	4.9-5.0	20.0-22.0	1800	1500
ASD6-16	4.8	3/16"	30	2.0	10.1	27	4.9-5.0	21.0-25.0	1800	1500
ASD6-20	4.8	3/16"	35	2.0	10.1	27	4.9-5.0	25.0-30.0	1800	1500
ASD6-22	4.8	3/16"	40	2.0	10.1	27	4.9-5.0	30.0-35.0	1800	1500
ASD6-28	4.8	3/16"	50	2.0	10.1	27	4.9-5.0	35.0-45.0	1800	1500

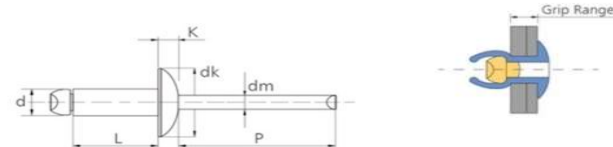
1300 532 803
sales@tower-tr.com.au
www.tower-tr.com.au

Disclaimer: every effort has been made to ensure the information provided in this document is accurate and up to date. However, Tower Fastening System does not guarantee or warrant the accuracy, completeness, or currency of the information provided.



Open Blind Rivet

Blind Rivets are now capable in every industrial field to replace Welding, Tapping Screws or Bolts & Nuts and to fasten materials speedily and securely from one side of the work by using an exclusive fastening tool.



Advantage:

- * Strong but lower cost fastener
- * Available in variety of materials and ideal for wide range of applications
- * Painted color finished available to match surrounding

Applications

- Office furniture
- Automotive
- Building
- Construction
- Leather production

	Material	Finish	Head
Body:	Aluminium 5052	Polished	Dome (Truss)
Mandrel:	Steel	Zinc Plated	

Product Code SKU	Size		Body Length	Head Height	Head Dia. (Max)	Mandrel (Ref)	Hole Size	Grip Range	Tensile	Shear
	d (mm)	Inch	L (±1)mm	K (mm)	dK (mm)	P (mm)	(mm)	(mm)	N	N
ASD8-2	6.4	1/4"	10	2.7	13.4	27	6.5-6.6	1.5-4.0	3400	2700
ASD8-4	6.4	1/4"	12	2.7	13.4	27	6.5-6.6	3.0-6.0	3400	2700
ASD8-6	6.4	1/4"	16	2.7	13.4	27	6.5-6.6	6.0-10.0	3400	2700
ASD8-8	6.4	1/4"	20	2.7	13.4	27	6.5-6.6	10.0-14.0	3400	2700
ASD8-10	6.4	1/4"	23	2.7	13.4	27	6.5-6.6	12.0-16.0	3400	2700
ASD8-12	6.4	1/4"	25	2.7	13.4	27	6.5-6.6	14.0-18.0	3400	2700
ASD8-14	6.4	1/4"	28	2.7	13.4	27	6.5-6.6	18.0-21.0	3400	2700
ASD8-16	6.4	1/4"	30	2.7	13.4	27	6.5-6.6	18.0-23.0	3400	2700

1300 532 803
sales@tower-tr.com.au
www.tower-tr.com.au

Disclaimer: every effort has been made to ensure the information provided in this document is accurate and up to date. However, Tower Fastening System does not guarantee or warrant the accuracy, completeness, or currency of the information provided.

