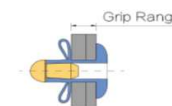
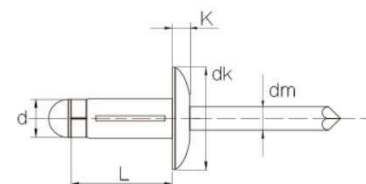


Bulb-tite (Tri-Firm) Blind Rivets

A **bulb tite blind rivet** provides a 'Y' shaped split tail formation, providing a large blind side bearing area. This will also provide a relatively high resistance to pull out loads.



Advantage:	Applications
<ul style="list-style-type: none"> * Resists pull-out and cracking the work piece * Extra large secondary head provides more bearing surface * With the wide spreading tail, this rivet has a greater tolerance of oversized holes and offer a wide grip range 	<ul style="list-style-type: none"> • Soft Material such as wood • Insulation • Plastic • Plaster boards

	Material	Finish	Head
Body:	Aluminum Alloy	Natural Polish	Large Flange
Mandrel:	Aluminum Alloy	Natural Polish	

Product Code SKU	Size		Body Length	Head Height	Head Dia. (Max)	Mandrel (Ref)	Hole Size	Grip Range	Tensile	Shear
	D (mm)	Inch								
AALBT5-6	4.0	5/32"	20	2.0	12.5	27	4.2-4.5	1.5-9.5	700	600
AALBT5-6 ^{NS}	4.0	5/32"	20	2.0	12.5	27	4.2-4.5	1.5-9.5	700	600
AALBT5-8	4.0	5/32"	25	2.0	12.5	27	4.2-4.5	2.0-13.0	700	600
AALBT6-4	4.8	3/16"	18	2.5	16.5	27	5.1-5.3	1.0-6.0	1100	800
AALBT6-6	4.8	3/16"	21	2.5	16.5	27	5.1-5.3	1.0-8.5	1100	800
AALBT6-6 ^{NS}	4.8	3/16"	21	2.5	16.5	27	5.1-5.3	1.0-8.5	1100	800
AALBT6-8	4.8	3/16"	25	2.5	16.5	27	5.1-5.3	1.5-12.5	1100	800

^{NS} - Night Sky (Colour)

1300 532 803
sales@tower-tr.com.au
www.tower-tr.com.au

Disclaimer: every effort has been made to ensure the information provided in this document is accurate and up to date. However, Tower Fastening System does not guarantee or warrant the accuracy, completeness, or currency of the information provided.

