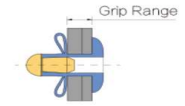
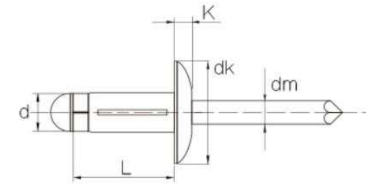




## Bulb-tite (Tri-Firm) Blind Rivets

A bulb tite blind rivet provides a 'Y' shaped split tail formation, providing a large blind side bearing area. This will also provide a relatively high resistance to pull out loads.



Advantage:	Applications
<ul style="list-style-type: none"> <li>* Resists pull-out and cracking the work piece</li> <li>* Extra large secondary head provides more bearing surface</li> <li>* With the wide spreading tail, this rivet has a greater tolerance of oversized holes and offer a wide grip range</li> </ul>	<ul style="list-style-type: none"> <li>• Soft Material such as wood</li> <li>• Insulation</li> <li>• Plastic</li> <li>• Plaster boards</li> </ul>

	Material	Finish	Head
<b>Body:</b>	Aluminum Alloy	Natural Polish	Dome (Trust)
<b>Mandrel:</b>	Aluminum Alloy	Natural Polish	

Product Code SKU	Size		Body Length L (±1)mm	Head Height K (mm)	Head Dia. (Max) dK (mm)	Mandrel (Ref) P (mm)	Hole Size (mm)	Grip Range (mm)	Tensile N	Shear N
	D (mm)	Inch								
AADBT5-2	4.0	5/32"	14.0	1.7	8.4	27	4.2-4.5	1.0-3.0	700	600
AADBT5-4	4.0	5/32"	18.8	1.7	8.4	27	4.2-4.5	1.5-7.5	700	600
AADBT5-6	4.0	5/32"	20.8	1.7	8.4	27	4.2-4.5	1.5-9.5	700	600
AADBT5-8	4.0	5/32"	25.0	1.7	8.4	27	4.2-4.5	2.0-13.0	700	600
AADBT6-4	4.8	3/16"	18.0	2.0	10.1	27	5.1-5.3	1.0-6.0	1100	800
AADBT6-8	4.8	3/16"	25.0	2.0	10.1	27	5.1-5.3	1.5-12.5	1100	800
AADBT6-12	4.8	3/16"	31.0	2.0	10.1	27	5.1-5.3	6.0-18.5	1100	800

1300 532 803  
 sales@tower-tr.com.au  
 www.tower-tr.com.au

Disclaimer: every effort has been made to ensure the information provided in this document is accurate and up to date. However, Tower Fastening System does not guarantee or warrant the accuracy, completeness, or currency of the information provided.

